

2019 Traffic Signal Improvements: Bernard Ave at Crescent Drive (Eastbound)

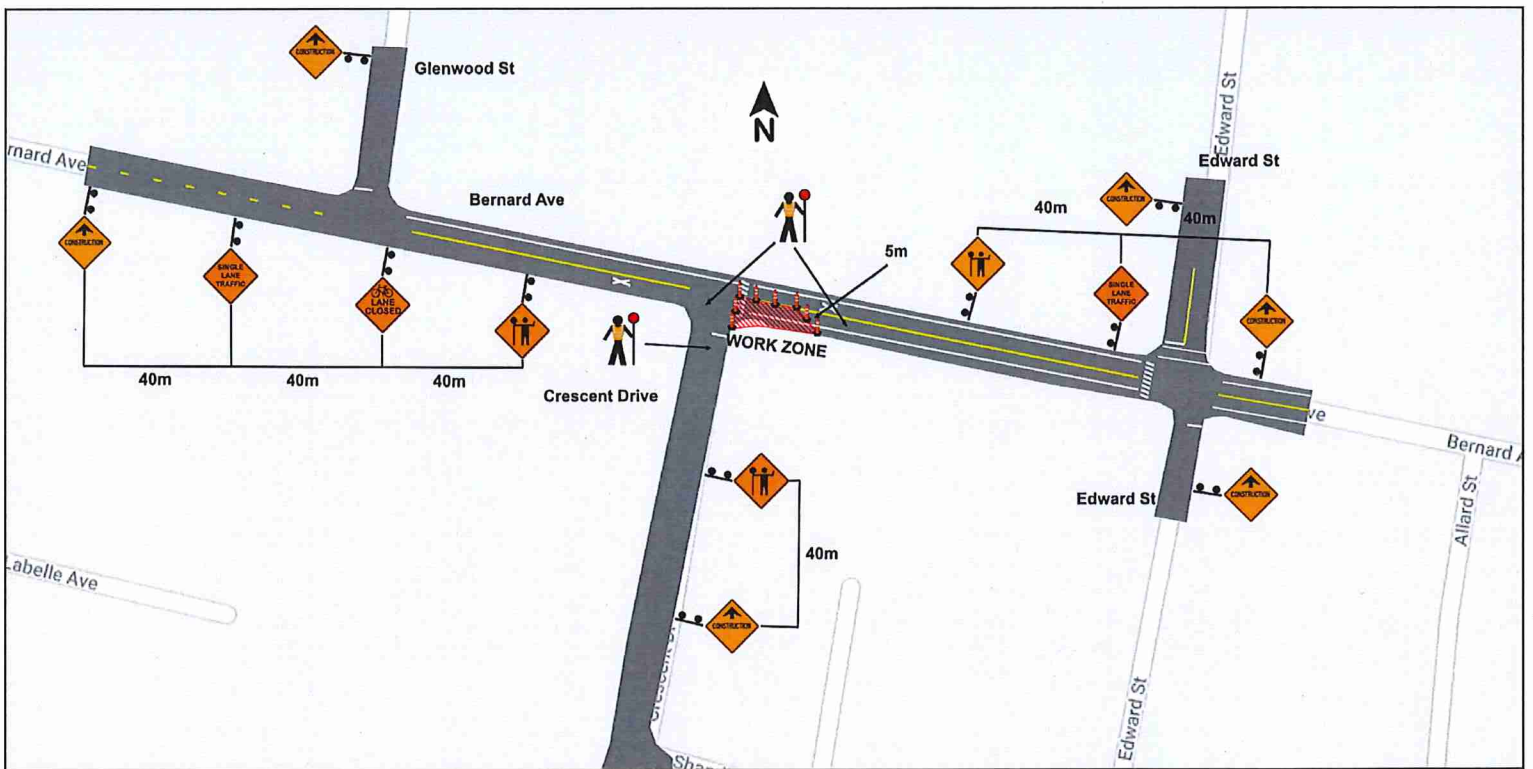


Figure 11.2: Intersection Lane Closure - Two-Lane, Two-Way Roadway with TCP's (Near Side) - Short and Long Duration
Let down to stay clear for use during construction. TCP's on site to assist with vehicles, pedestrians, bicyclists and all others.

2019 Traffic Signal Improvements: Bernard Ave at Crescent Drive (Shoulder Closure)

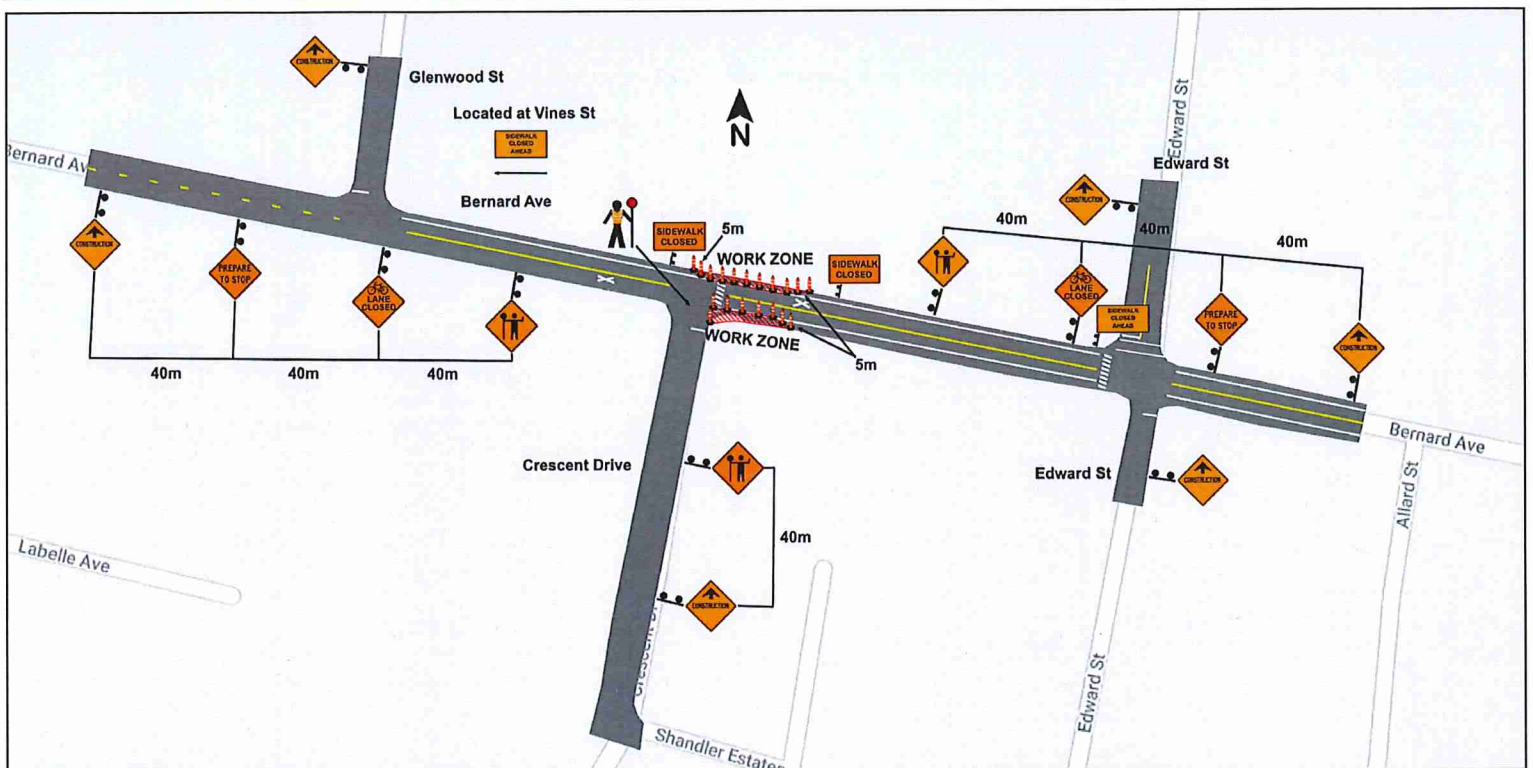


Figure 7.5: Work on Shoulder - Short and Long Duration
 Both closures shown - Only one side to be worked on at a time
 Letdown to stay clear for use during construction. TCP on site to assist with vehicles, pedestrians, bicyclists and all others.

2019 Traffic Signal Improvements: Bernard Ave at Crescent Drive (Westbound)

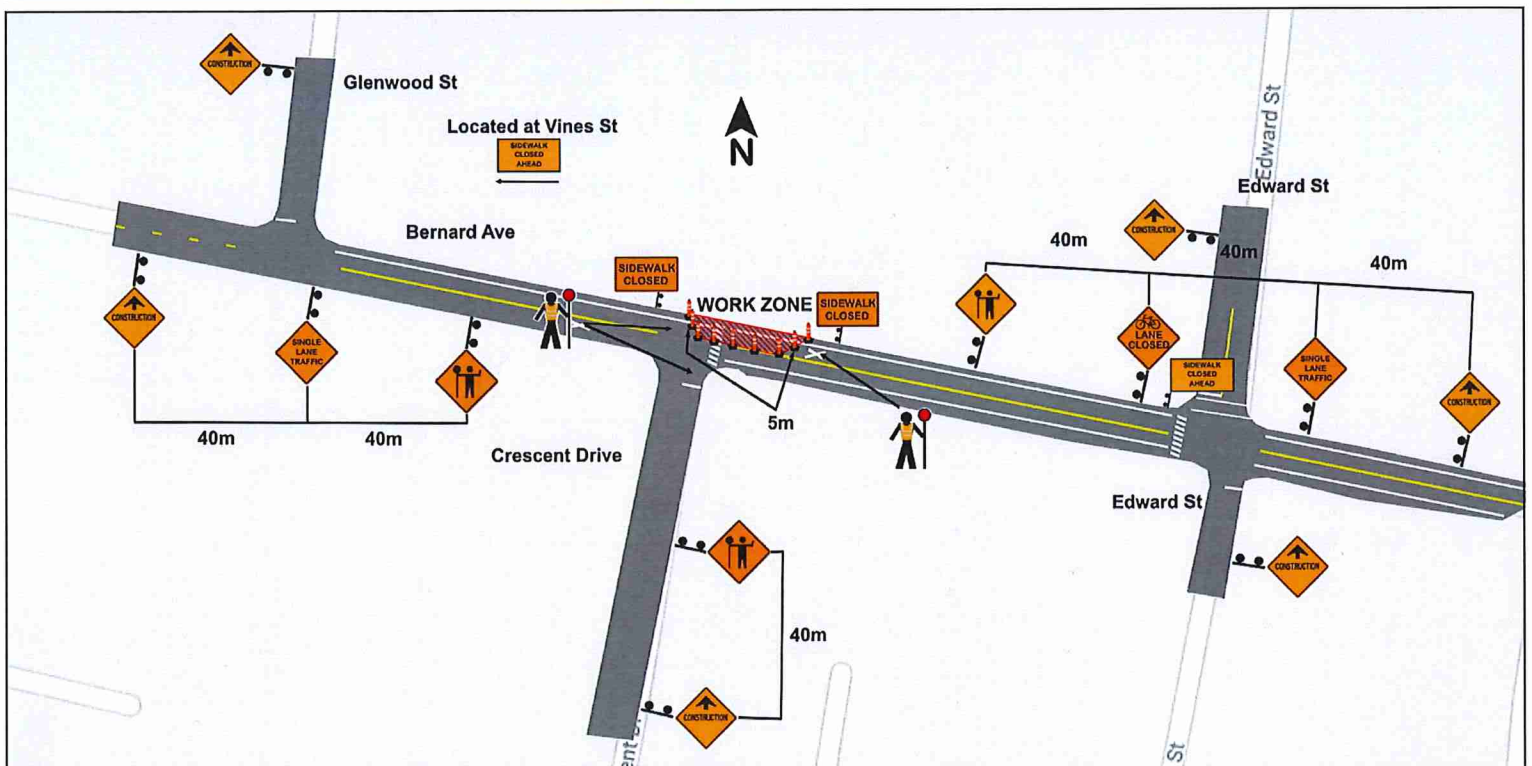


Figure 11.4: Intersection Lane Closure - Two-Lane, Two-Way Roadway with TCP's (Far Side) - Short and Long Duration Letdown to stay clear for use during construction. TCPs on site to assist with vehicles, pedestrians, bicyclists and all others.